



LOGISTICS LEGEND	
<span style="color: orange;">■</span> CE	Construction Entrance w/ Traffic Gates
<span style="color: purple;">■</span> CE	Construction Entrance & Exit w/ Traffic Gates
<span style="color: red;">■</span> CE	Construction Exit w/ Traffic Gates
<span style="color: green;">■</span> SM	Single Man Gate
	Tire Wash
<span style="color: yellow;">■</span> BT	Break Tent
<span style="color: pink;">■</span> CR	Construction Road / Crane Path
<span style="color: orange;">■</span> LA	Lay Down Area
<span style="color: green;">■</span> DU	Dumpster
<span style="color: yellow;">■</span> PT	Portable Toilet
<span style="color: magenta;">-</span>	Pedestrian Walk Paths
<span style="color: cyan;">■</span> TP	Turner Office Parking
<span style="color: blue;">■</span> TO	Turner Office
	Way-finding Signage

**GENERAL NOTES:**

1. Construct and maintain a minimum of 1 pedestrian walk path around the perimeter and connecting to each area of construction to provide a safe and clean path of travel throughout the site. Path should be a minimum of 6" of crusher run.
2. Last 100' (Hatched Area) of temporary construction roads to be larger sized surge stone to remove mud from trucks tires, equipment tracks, etc.





### LOGISTICS LEGEND

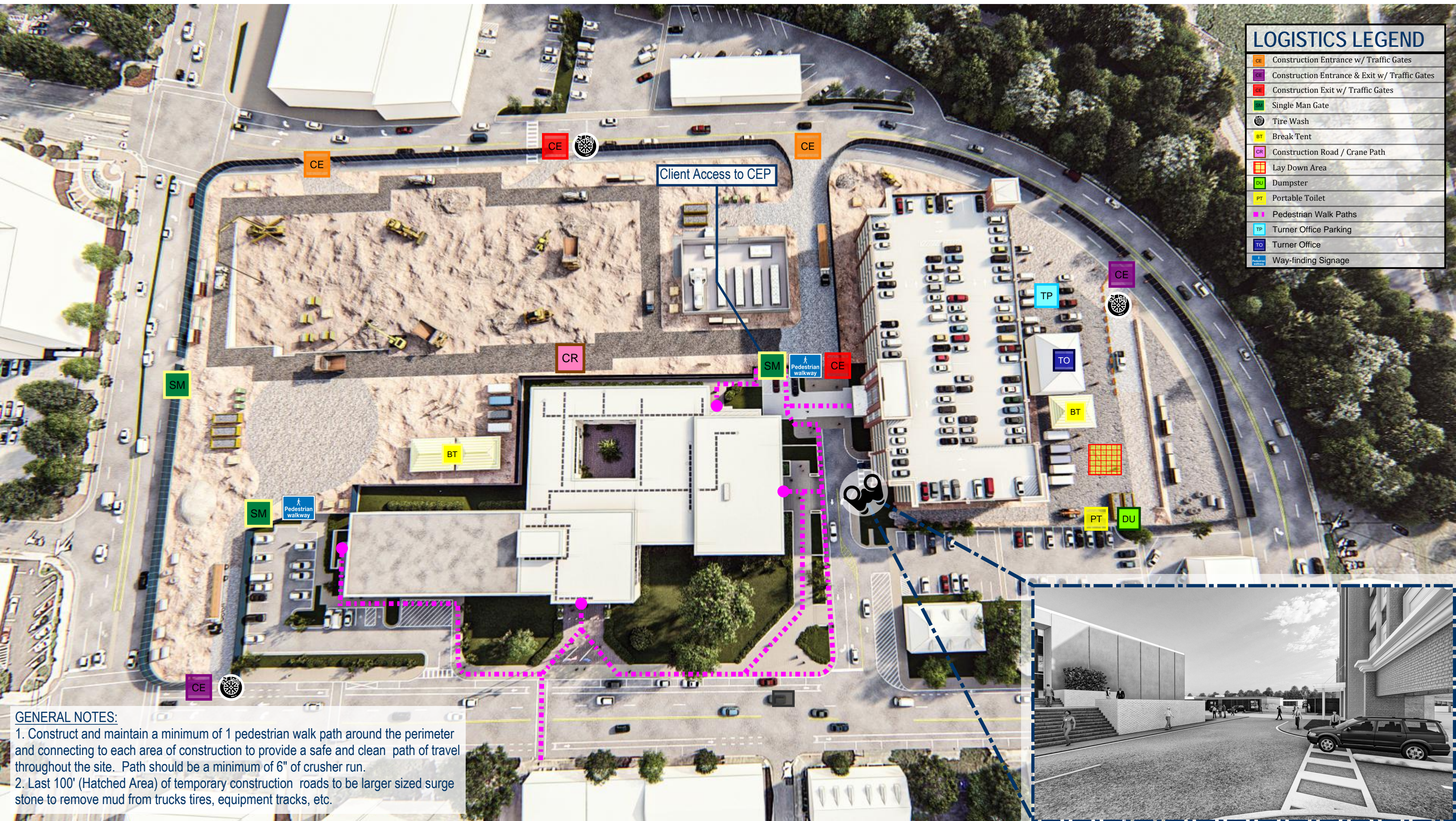
CE	Construction Entrance w/ Traffic Gates
CE	Construction Entrance & Exit w/ Traffic Gates
CE	Construction Exit w/ Traffic Gates
SM	Single Man Gate
TW	Tire Wash
BT	Break Tent
CR	Construction Road / Crane Path
LA	Lay Down Area
DU	Dumpster
PT	Portable Toilet
PW	Pedestrian Walk Paths
TP	Turner Office Parking
TO	Turner Office
WS	Way-finding Signage

Judges Parking Lot Complete

**GENERAL NOTES:**

1. Construct and maintain a minimum of 1 pedestrian walk path around the perimeter and connecting to each area of construction to provide a safe and clean path of travel throughout the site. Path should be a minimum of 6" of crusher run.
2. Last 100' (Hatched Area) of temporary construction roads to be larger sized surge stone to remove mud from trucks tires, equipment tracks, etc.





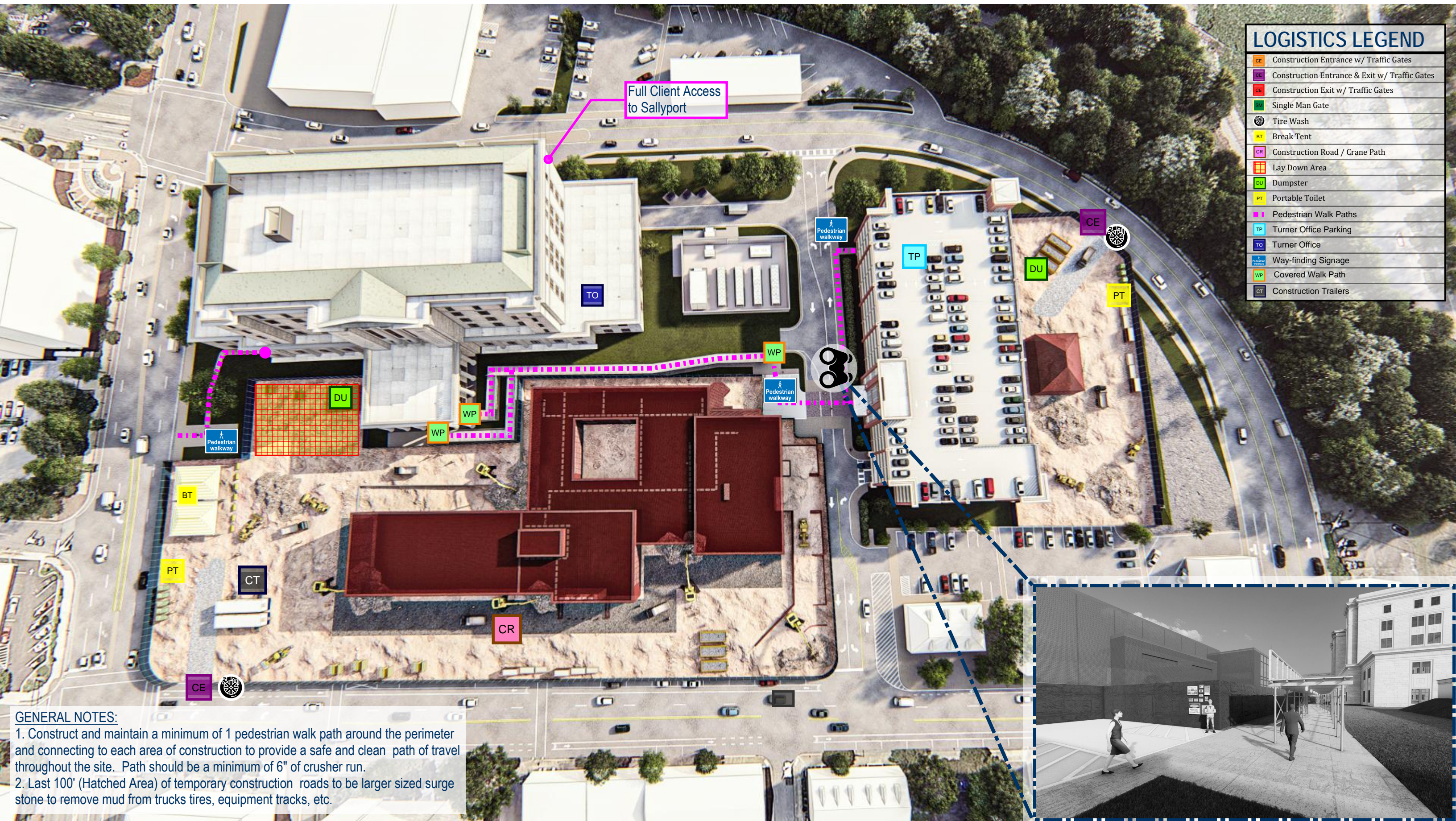
### LOGISTICS LEGEND

CE	Construction Entrance w/ Traffic Gates
CE	Construction Entrance & Exit w/ Traffic Gates
CE	Construction Exit w/ Traffic Gates
SM	Single Man Gate
TW	Tire Wash
BT	Break Tent
CR	Construction Road / Crane Path
LA	Lay Down Area
DU	Dumpster
PT	Portable Toilet
PW	Pedestrian Walk Paths
TP	Turner Office Parking
TO	Turner Office
WS	Way-finding Signage

**GENERAL NOTES:**

1. Construct and maintain a minimum of 1 pedestrian walk path around the perimeter and connecting to each area of construction to provide a safe and clean path of travel throughout the site. Path should be a minimum of 6" of crusher run.
2. Last 100' (Hatched Area) of temporary construction roads to be larger sized surge stone to remove mud from trucks tires, equipment tracks, etc.





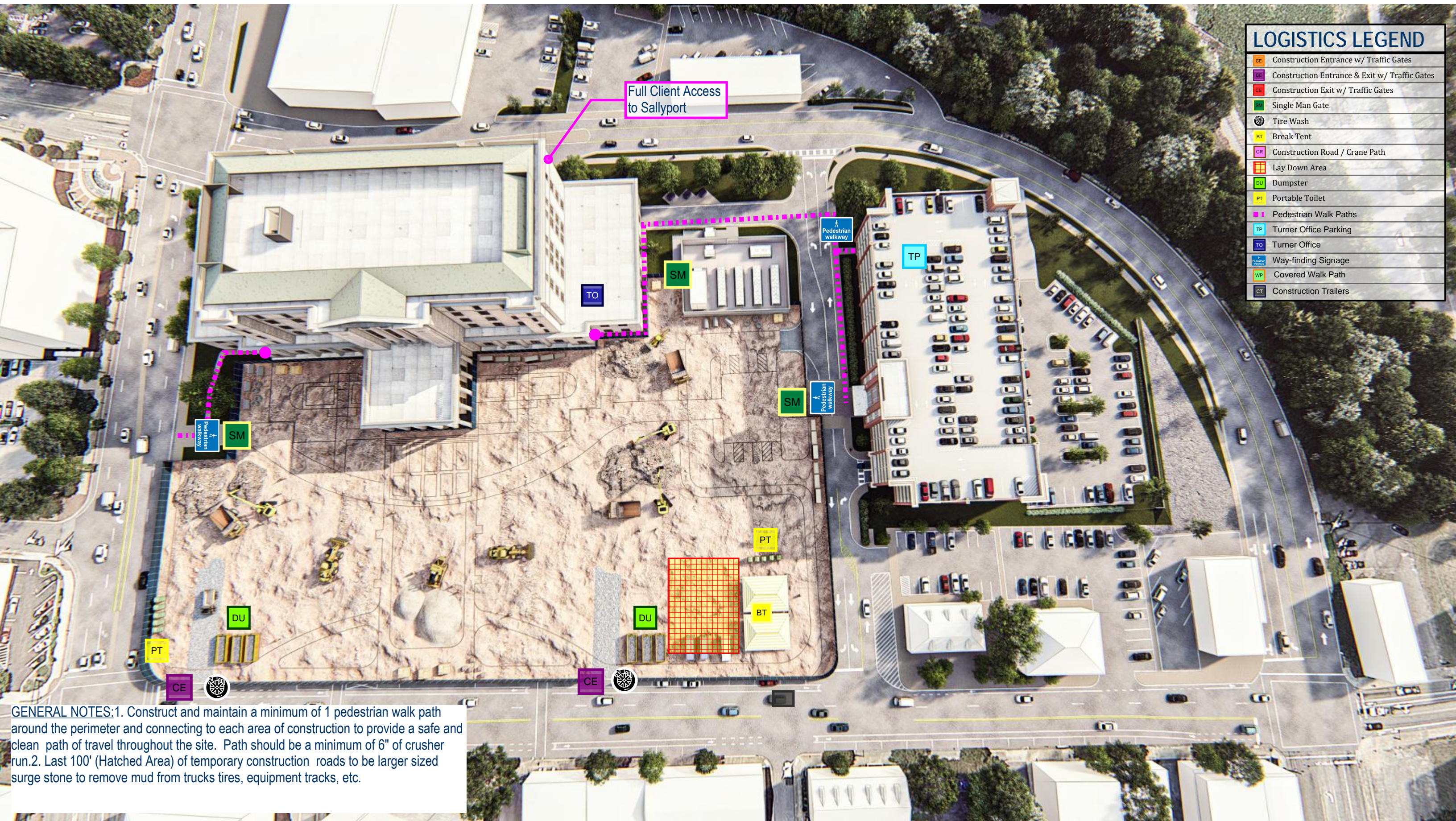
### LOGISTICS LEGEND

CE	Construction Entrance w/ Traffic Gates
CE	Construction Entrance & Exit w/ Traffic Gates
CE	Construction Exit w/ Traffic Gates
SM	Single Man Gate
TW	Tire Wash
BT	Break Tent
CR	Construction Road / Crane Path
LD	Lay Down Area
DU	Dumpster
PT	Portable Toilet
WP	Pedestrian Walk Paths
TP	Turner Office Parking
TO	Turner Office
WS	Way-finding Signage
WP	Covered Walk Path
CT	Construction Trailers

Full Client Access to Sallyport

**GENERAL NOTES:**  
 1. Construct and maintain a minimum of 1 pedestrian walk path around the perimeter and connecting to each area of construction to provide a safe and clean path of travel throughout the site. Path should be a minimum of 6" of crusher run.  
 2. Last 100' (Hatched Area) of temporary construction roads to be larger sized surge stone to remove mud from trucks tires, equipment tracks, etc.





LOGISTICS LEGEND	
	Construction Entrance w/ Traffic Gates
	Construction Entrance & Exit w/ Traffic Gates
	Construction Exit w/ Traffic Gates
	Single Man Gate
	Tire Wash
	Break Tent
	Construction Road / Crane Path
	Lay Down Area
	Dumpster
	Portable Toilet
	Pedestrian Walk Paths
	Turner Office Parking
	Turner Office
	Way-finding Signage
	Covered Walk Path
	Construction Trailers

Full Client Access to Sallyport

GENERAL NOTES: 1. Construct and maintain a minimum of 1 pedestrian walk path around the perimeter and connecting to each area of construction to provide a safe and clean path of travel throughout the site. Path should be a minimum of 6" of crusher run. 2. Last 100' (Hatched Area) of temporary construction roads to be larger sized surge stone to remove mud from trucks tires, equipment tracks, etc.